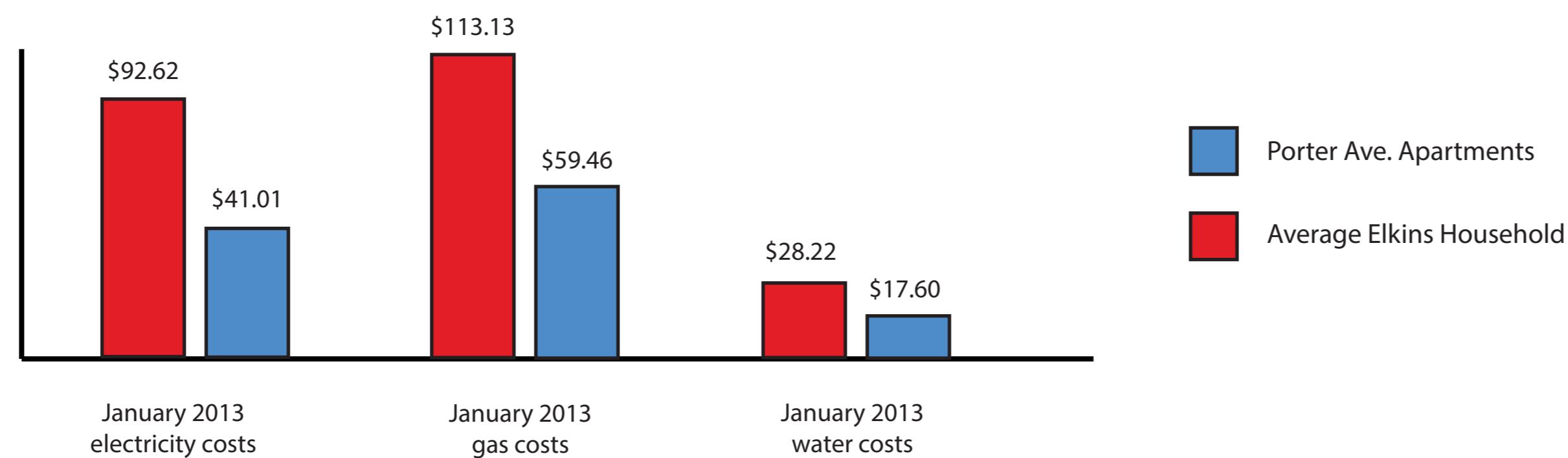
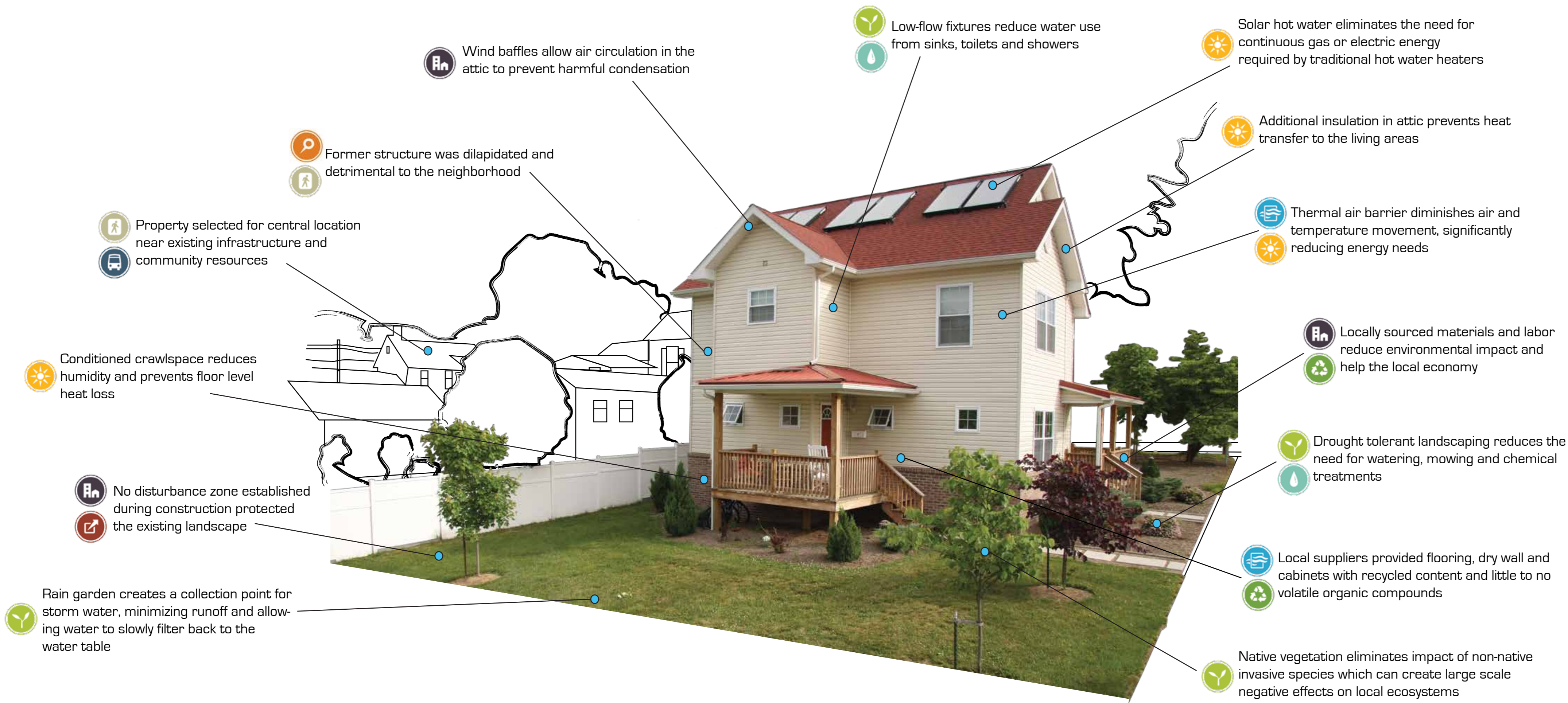


Porter Avenue Triplex Apartments



Woodlands Development Group helps build healthy, viable communities in this region by developing sustainable, affordable housing and supporting economic initiatives. We build homes for low and moderate income families, develop rental housing, purchase and renovate older buildings, and assist local communities with downtown redevelopment and public facilities.



The Leadership in Energy and Environmental Design program is a voluntary rating system created by the US Green Building Council that demonstrates the "health" of a building for its residents, the community and the environment. All facets of the building process are measured and guided by the rating system. This extends from the earliest phases, like selecting a proper building location, to well beyond completion.

Porter's platinum rating is the highest level achievable in the program.



- Water efficiency** credits promote smarter use of water, inside and out, to reduce potable water consumption.
- Energy and atmosphere** credits promote better building energy performance through innovative strategies.
- Indoor environmental quality** credits promote better indoor air quality and access to daylight and views.
- Green infrastructure & buildings** credits reduce the environmental consequences of the construction and operation of buildings and infrastructure.
- Innovation** credits address sustainable building expertise as well as design measures not covered under the five LEED credit categories.
- Integrative process** requirements promote reaching across disciplines to incorporate diverse team members during the pre-design period.
- Location and transportation** credits reward projects within relatively dense areas, near diverse uses, with access to a variety of transportation options.
- Materials and resources** credits encourage using sustainable building materials and reducing waste.
- Neighborhood pattern & design** credits emphasize compact, walkable, vibrant, mixed-use neighborhoods with good connections to nearby communities.
- Regional priority** credits address regional environmental priorities for buildings in different geographic regions.
- Sustainable sites** credits encourage strategies that minimize the impact on ecosystems and water resources.